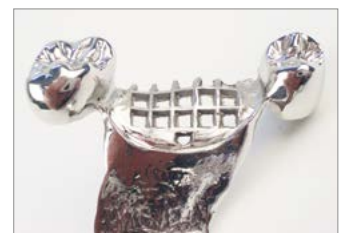
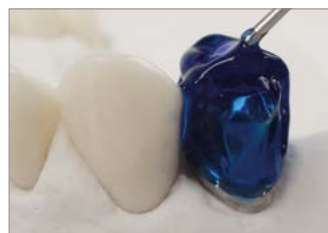
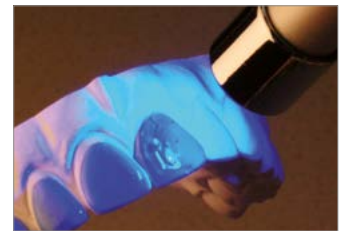


BLUE-BLOKKER®

Light-curing blocking-out resin for orthodontics and telescope prosthesis



- // Sealing of saw cuts and blocking of teeth and teeth segments after adjustment in the set-up technique.
- // Precise application of the gel reservoir – (depending on the bleaching system) – in accurately defined thickness for bleaching and fluoridation splints and medical trays.
- // Blocking out cervical margins, gaps, and deeply undercut teeth as well as fixing of wire elements when fabricating hard elastic splints.
- // Apply BLUE-BLOKKER® directly out of the dosing tip. It can be very well combined with conventional waxes. The light-cured BLUE-BLOKKER® outer telescopes will be very stable and can be removed easily without tension. Even when working with higher thicknesses, BLUE-BLOKKER® will burn without residues. The results will show high dimensional stability and perfect fitting.
- // The ideal viscosity as well as the micro and mini cannula allow precise application of the material. Hardening with standard UV light with a spectral range of 380-470 nm. Depending on material quantity and type of light, BLUE-BLOKKER® cures within 10-30 seconds.



Delivery Program

// BLUE-BLOKKER® 4 × 1.5 g, incl. 10 cannulas	1 piece	#5276
// Cannula micro (Ø 0.6 mm)	5 pieces	#5264
// Cannula mini (Ø 0.9 mm)	5 pieces	#5278

In case you intend to duplicate the model using silicone, make sure to remove the inhibition layer of BLUE-BLOKKER® before duplicating. We recommend using for example a paper tissue soaked in ethanol.

