

Preventive Care Solutions

Clinpro™ White Varnish

With Tri-Calcium Phosphate



It's good to have a little
extra protection

3M ESPE

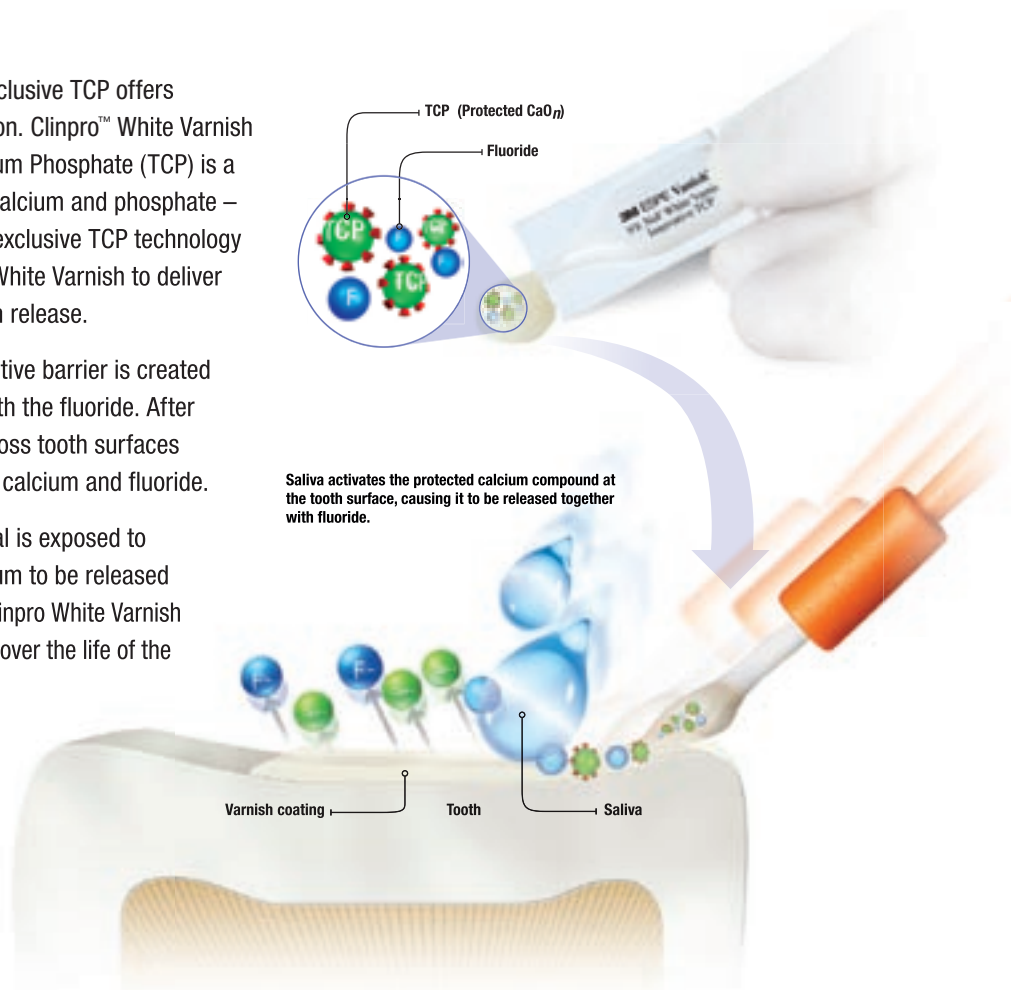
Clinpro™ White Varnish keeps getting better – now with TCP

You + 3M ESPE =
New ideas for dentistry

3M ESPE's exclusive TCP offers more protection. Clinpro™ White Varnish with Tri-Calcium Phosphate (TCP) is a proprietary formula that contains fluoride, calcium and phosphate – components naturally found in saliva. This exclusive TCP technology has been customized to work with Clinpro White Varnish to deliver targeted and sustained fluoride and calcium release.

During the manufacturing process, a protective barrier is created around the calcium allowing it to coexist with the fluoride. After application, Clinpro White Varnish flows across tooth surfaces and comes in contact with saliva, releasing calcium and fluoride.

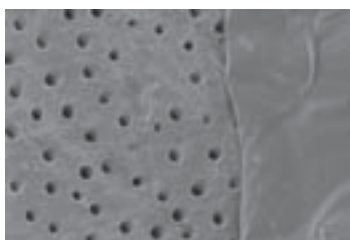
As the varnish moves, more varnish material is exposed to saliva allowing additional fluoride and calcium to be released on the tooth surface. This process enables Clinpro White Varnish to continuously release fluoride AND calcium over the life of the varnish – up to 24 hours!



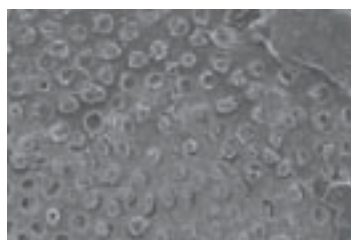
Immediate and long-lasting occlusion.

Occluding dentinal tubules in-office provides immediate relief from pain associated with the movement of fluid through open tubules. Clinpro White Varnish penetrates and seals dentin tubules.

Clinpro White Varnish enters and blocks tubules.



SEM image at 1500X magnification
Clinpro™ White Varnish covers and occludes open tubules for immediate relief.



SEM image at 1500X magnification
After the bulk of the varnish has been removed from the surface, Clinpro™ White Varnish continues to block tubule openings for long-lasting protection.

Less sensitivity

Few patients can identify WHICH tooth is the cause of their discomfort.*

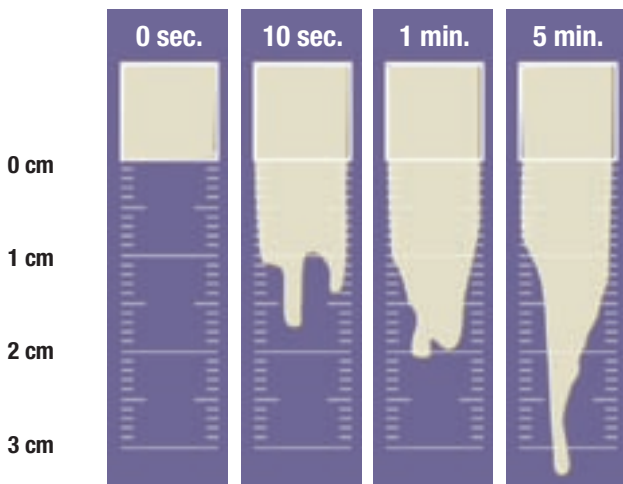
Clinpro White Varnish spreads to more tooth surfaces, offering a distinct advantage in the treatment of hypersensitivity, where the pain may be related to several tooth surfaces, including those in interproximal areas.

* Source: Gillam DG, Seo HS, Bulman JS, Newman HN; Jour of Oral Rehab, 1999;26:710-714

Flows better and reaches areas traditional varnishes may miss.

How does Clinpro White Varnish get into the hard-to-reach places? It flows better than other varnishes tested, and doesn't just harden and stop where applied. Clinpro White Varnish remains fluid longer, and continues to flow from treated to untreated tooth surfaces – including interproximal areas.

Vertical Flow Test

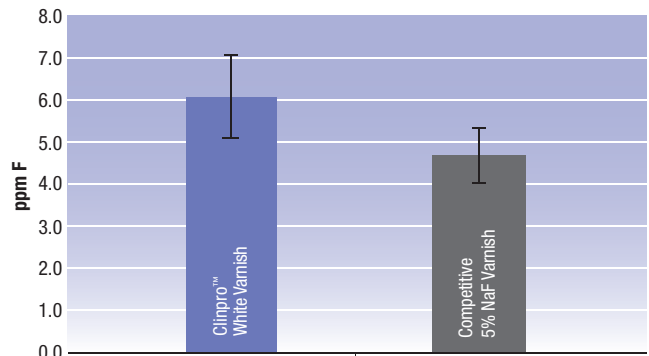


Flow measured as the vertical distance Clinpro™ White Varnish travels in the presence of water after initial application over time.
Source: 3M ESPE internal data

Delivers more fluoride.

Because of this ability to flow across and between teeth, more varnish reaches more tooth surfaces – and more fluoride is released in the mouth compared to competitive varnish tested.

Mean Fluoride Concentration After 1 Hour

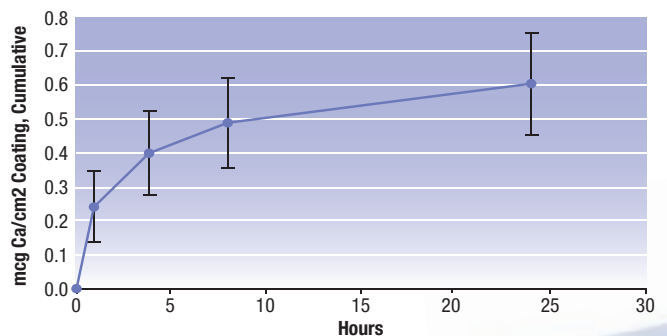


Clinical test shows Clinpro™ White Varnish provides higher average salivary fluoride levels *in vivo*.
Source: 3M ESPE internal data

Releases calcium.

Products that provide both fluoride and calcium are designed to help increase formation of calcium fluoride on tooth surfaces, including dentin tubules, to relieve hypersensitivity.

Cumulative Calcium Release

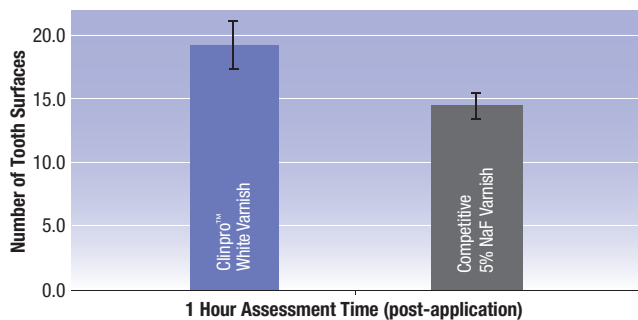


After application, Clinpro™ White Varnish continues to release calcium ions over at least 24 hours.
Source: 3M ESPE internal data

Covers more tooth surfaces.

Clinical studies show that Clinpro White Varnish flows to more than twice as many tooth surfaces after application.

In Vivo Varnish Flow Test – After 1 Hour



Clinpro™ White Varnish was applied to 8 anterior maxillary surfaces *in vivo*. After application, it moves across the teeth, penetrating hard-to-reach places.
Source: 3M ESPE internal data



Applying Clinpro™ White Varnish is easy and it takes just seconds

Simply apply one thin coat, sweeping the brush across tooth surfaces – and the Clinpro White Varnish formula does the rest.

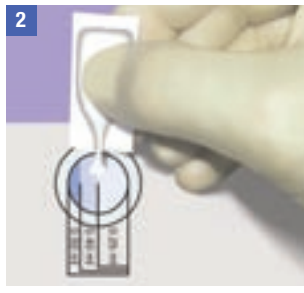
- Sets in the presence of saliva – no drying needed
- Enhanced flow characteristics allow Clinpro White Varnish to reach interproximal areas other varnishes may miss
- Covers and adheres to the areas where applied

No drying

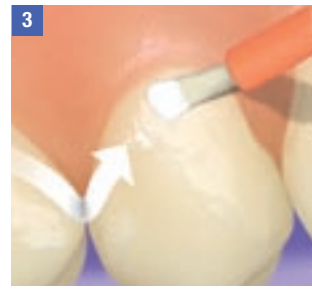
Better protection made easy



1 The tooth surface(s) to be treated should minimally be "toothbrush clean." Can be applied in the presence of plaque.



2 Open the unit dose package of Clinpro™ White Varnish and mix.



3 Apply Clinpro™ White Varnish evenly in a thin layer over treatment area(s) with sweeping, horizontal brush strokes.

After application, instruct the patient to close his or her mouth to set the Clinpro™ White Varnish. Do not use suction. Please refer to Instructions for use for more detailed information, as well as precautionary and warranty information.

Protection you can't see.

Clinpro White Varnish is virtually invisible on the teeth – but leaves a temporary thin coating so patients know it's working.



Immediately after Clinpro™ White Varnish was applied.



Summary of advantages

- Now contains an exclusive calcium and phosphate ingredient
- 5 years of clinical success
- Contains 22,600 ppm fluoride
- Covers more tooth surfaces to deliver fluoride
- Releases calcium
- Easy to apply
- Relieves hypersensitivity

Easy for you to use – a better experience for your patients

Fluoride treatment has to be convenient. Clinpro™ White Varnish with an innovative Tri-Calcium Phosphate (TCP) ingredient is simple to use and comfortable to wear. 3M ESPE formulated Clinpro White Varnish so that the area to be treated needs to be only “toothbrush clean” – no complicated pretreatment is necessary. It can even be applied if plaque is present.

Plus, it offers other great advantages

- The application takes just seconds
- The patient can eat and drink following the application
- The color is similar to enamel, so it's virtually invisible
- Available in Mint flavor; sweetened with xylitol



Clinically proven



Clinpro™ White Varnish with our exclusive TCP helps protect tomorrow's smiles

Ordering Information



Item No.	Product Information
12249	Clinpro™ White Varnish 50 Pack – Mint Flavor 50 unit-dose blister packets (0.5ml each) and applicator brushes in individual foil pouches; 1 patient pad; 60 dosage stickers; Technique Card
12250	Clinpro™ White Varnish 100 Pack – Mint Flavor 100 unit-dose blister packets (0.5ml each); 100 applicator brushes; 2 patient pads; 100 dosage stickers; Technique Card

3M ESPE

3M ESPE AG
ESPE Platz
82229 Seefeld · Germany
E-Mail: info3mespe@mmm.com
Internet: www.3mespe.com

You + 3M ESPE =
New ideas for dentistry

3M, ESPE and Clinpro are trademarks of 3M or 3M ESPE AG.

© 3M 2010. All rights reserved.

01 (04.2010)