

Composi-Tight® 3D Fusion™

Ultra Adaptive Wedges

Combining Soft-Face™ adaptive materials, a firm inner core and advanced mechanical features to produce a wedge that truly works. Every time.

Get a grip The universal gripping block gives you absolute control of the wedging process whether you're using a cotton pliers, hemostat or "pin" tweezers. Use what you like – 3D Fusion has you covered.

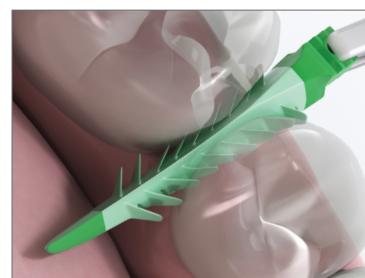
A real softie 3D Fusion's Soft-Face over-mold allows the wedge to do what no other wedge can truly do – actually adapt to interproximal irregularities.

Fins with serious function Soft retentive fins smoothly fold down during wedge insertion and then spring back when clear of the interproximal space. Wedge back-out is a thing of the past.

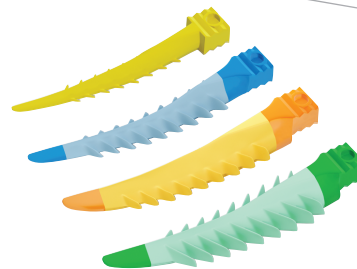
Tough on the inside The firm inner skeleton allows for easy insertion and tooth separation just like a traditional wedge.

No pain – all gain The upturned ski-like tip and soft radius edges glide over the rubber dam or papilla for trauma free insertion.

Keep it clean (and dry!) 3D Fusion's patent pending design easily follows the contours of the teeth sealing things up nice and tight while preventing overhangs.



Kit	Description	Qty.
FXK4-M	3D Fusion Wedge	50/ea. size
Refills		
FXYL	X-Small Yellow	100
FXBL	Small Blue	100
FXOR	Medium Orange	100
FXGR	Large Green	100



3D Fusion Wedges fuse two materials together to produce the perfect combination of adaptability and retention.

Garrison
Dental Solutions